



## The Campus at Drala Mountain Center



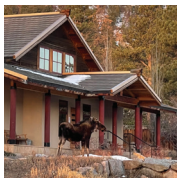
### The Great Stupa of Dharmakaya

Rising among wooded hillsides, The Great Stupa crowns a meadow at the upper end of Drala Mountain Center's main valley. Standing 108 feet tall, it is one of the most significant examples of sacred Buddhist architecture in North America.



### Greenhouse

We grow a variety of our very own fresh and delicious vegetables on site in our greenhouse and we are looking forward to several expansion projects this season. Visitors are welcome to explore!



### Sacred Studies Hall

An entryway of marbled tile welcomes you into a sunlit hall featuring bamboo floors and a multitude of windows, highlighting the vast outdoors.



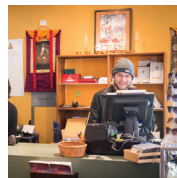
### Explore the Land

We welcome thousands of day visitors every year. You are encouraged to visit and explore the Stupa and more. Stop by Guest Services for maps and other helpful resources for your visit.



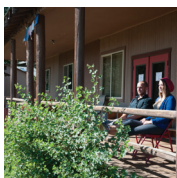
### Rigden Lodge & Shambhala Lodge

Located on our main campus, these lodges feature wood-finished rooms with one or two queen or full-sized beds, a desk, large closet, and private bathroom.



### Gift Shop

You'll find meditation cushions, Tibetan gongs, clothing, dharma books, jewelry and more. We also stock healthy snacks, kombucha and other drinks, ice cream, and more than 20 kinds of chocolate bars.



### Red Feather Campus

This more secluded environment is just a 12-minute walk from the main campus. Three cabins, 5 rooms each with two twin beds per room. Guests in Red Feather Cabins share a bathhouse just a few steps away.



### Kyudo Archery

Traditionally regarded as the highest form of samurai training, Japanese archery evolved over the centuries into a powerful path of cultivating meditative awareness and self-realization. Check out this unique feature of the land.



### Tent Accommodations

Platform tents are available June-September, weather permitting. Tents contain two twin beds with mattress pads, and an area to hang clothes and store books. The campground contains a bathhouse a short walk from each tent.



### Dine with Us!

Our kitchen provides three options for our guests: Omnivore, Vegetarian, and Vegan/Wheat-Free. A Vegetarian and/or Vegan/Wheat-Free option is available at all meals. Drop in by donation (\$15/psn recommended).